

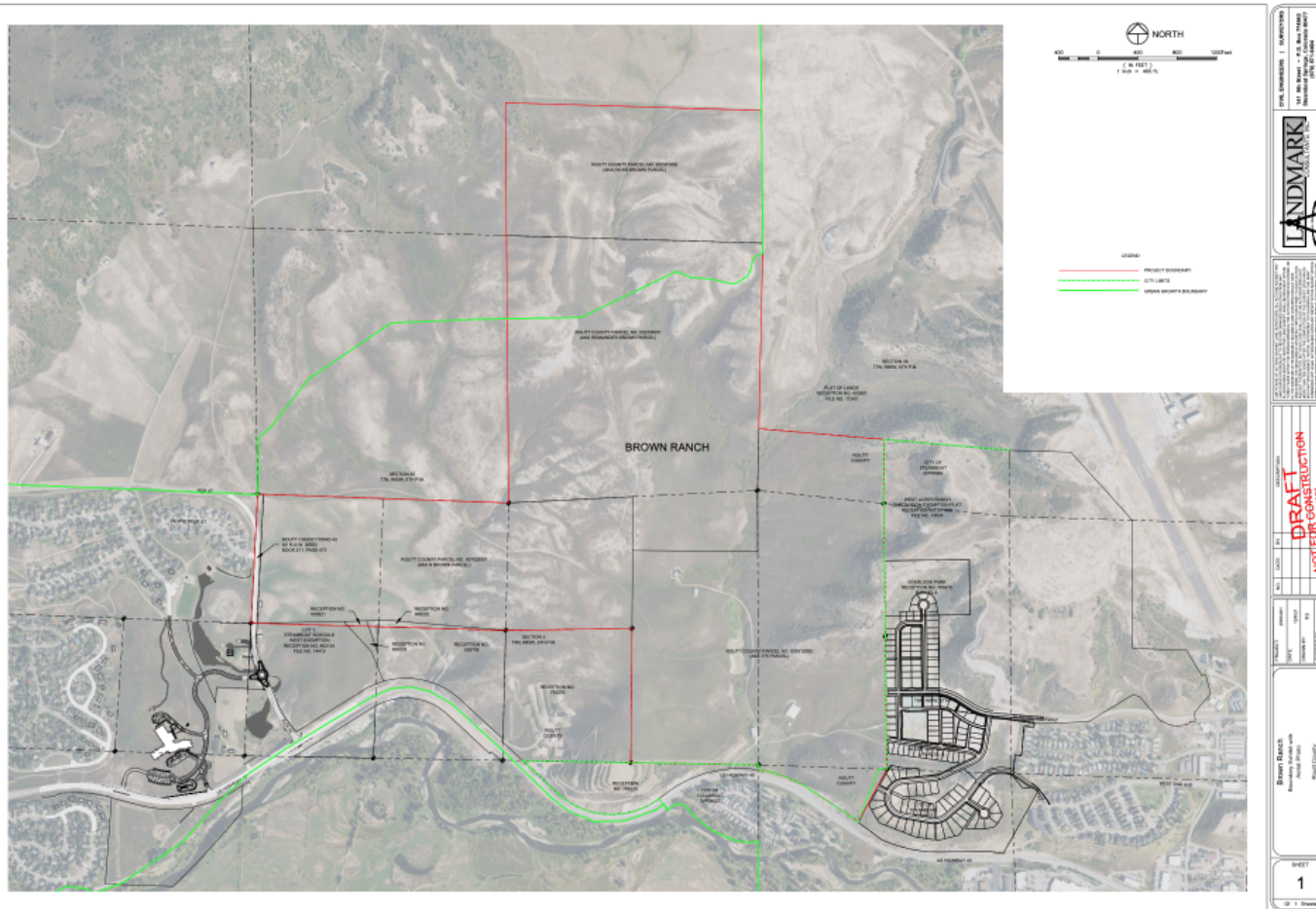


# BROWN RANCH



Jason Peasley  
Yampa Valley Housing Authority

## Steering Committee Vision Statement



*“The Brown Ranch residents will live and connect in a vibrant, resilient, diverse, and welcoming neighborhood that provides a wide variety of housing options and services designed by and for the Yampa Valley community.”*

## GUIDING PRINCIPLES

- 1) The Brown Ranch will provide affordable and attainable housing options for the Routt County workforce in a timely and efficient manner that meets both the urgent and long-term need.
- 2) The Brown Ranch will provide quality housing that is sustainable yet flexible, modern, efficient, safe, healthy, environmentally responsible, and in harmony with existing natural systems.
- 3) The Brown Ranch will be both physically and emotionally connected to the community, providing opportunity for social cohesion and successful vibrant and healthy lifestyles.



## HOPES AND CONCERNS

### HOPES

Grocery Store

Sustainability in all aspects

Solve the housing crisis long term

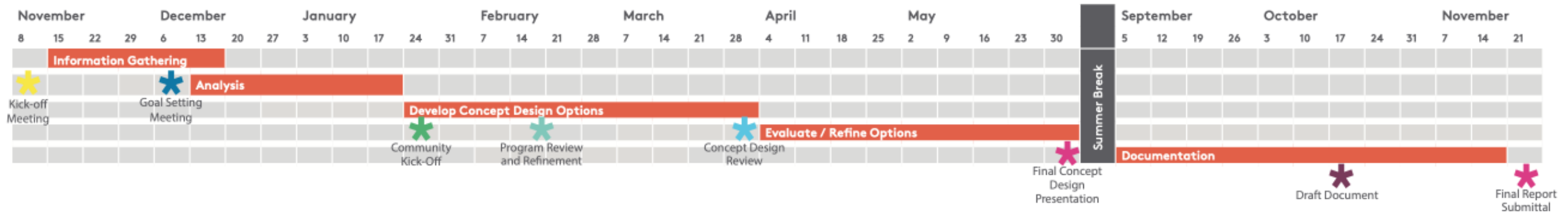
### CONCERNS

Traffic

Water Availability

Long Term Affordably

# PROJECT TIMELINE



## FOCUS TEAMS

- Housing and Non-Residential Demand
- Urban Design
- Infrastructure
- Natural and Built Sustainability
- Project Economics and Stewardship
- Stakeholder Outreach
- Health Outcomes



## COMMUNITY BASED SOLUTIONS

Decision making process to create an actionable Comprehensive Development Plan that aligns with the Steering Committee's vision.

Community Outreach & Technical Studies

Focus Teams

Steering Committee

YVHA Board

Affordable

Sustainable

Connected

Community  
Driven



## BY THE COMMUNITY, FOR THE COMMUNITY

The community driven process to design and develop the Brown Ranch will be inclusive, fact-based, honest, cost efficient and collaborative with all relevant stakeholders.





## COUNCIL QUESTION

What does the partnership between YVHA and the City look like to achieve success at Brown Ranch?