

Brown Ranch – Parks, Trails, and Open Space
Angela Cosby, Parks and Recreation Director

City Council and BRAC Reviewed:

- CDC, WSSAP, SSACP & PROSTR
- Existing level of service & use
- Brown Ranch Development Plan
- Discussed importance of equity and equality in service levels
- City Council provided direction



PARKS, OPEN SPACE, AND TRAILS

CONCEPT PLAN

	CURRENT AREA	REQUIRED AREA
TOTAL PARKLAND	70.30 AC	70.30 AC
COMMUNITY PARKS	39.66 AC	36.678 AC
PARK A	22.49 AC	
PARK B	17.17 AC	
NEIGHBORHOOD PARKS	30.65 AC	33.6215 AC
PARK C1	5.35 AC	
PARK C2	1.07 AC	
PARK D	0.53 AC	
PARK E	1.59 AC	
PARK F	1.97 AC	
PARK G	1.97 AC	
PARK H1	1.79 AC	
PARK H2	1.16 AC	
PARK I*	5.60 AC	
GREENWAY	9.60 AC	

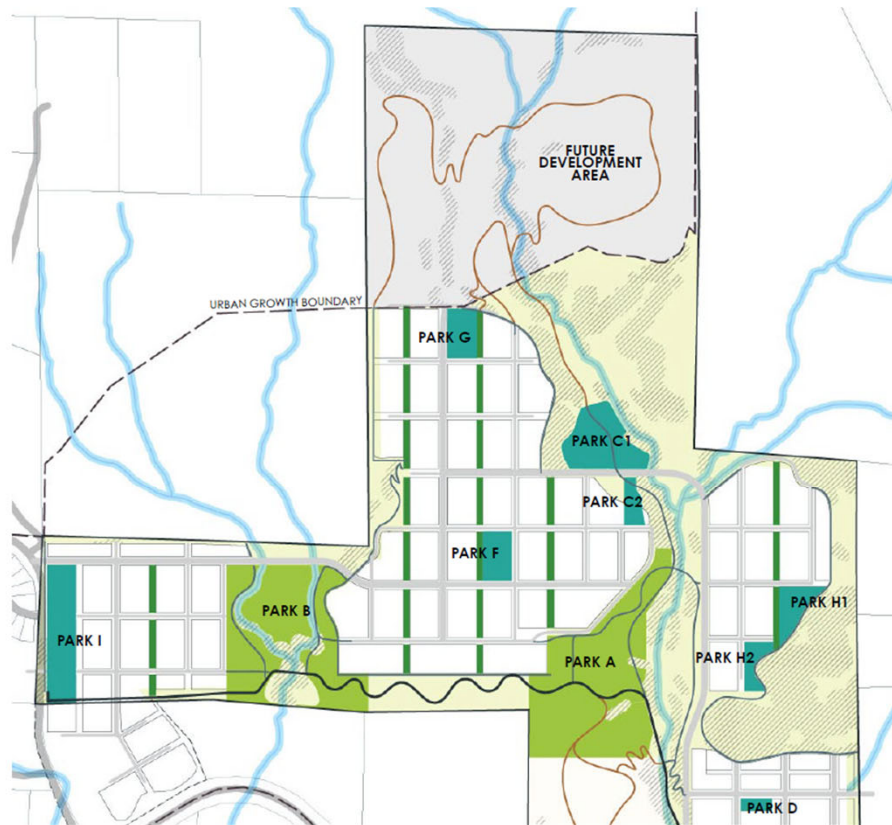
**Assumed population of 6,113 with Community Parkland at 6 acres / 1,000 population and Neighborhood Parkland at 5.5 acres / 1,000 population

*Park I is a neighborhood park with special use facility

TOTAL OPEN SPACE	125.00 AC
-------------------------	------------------

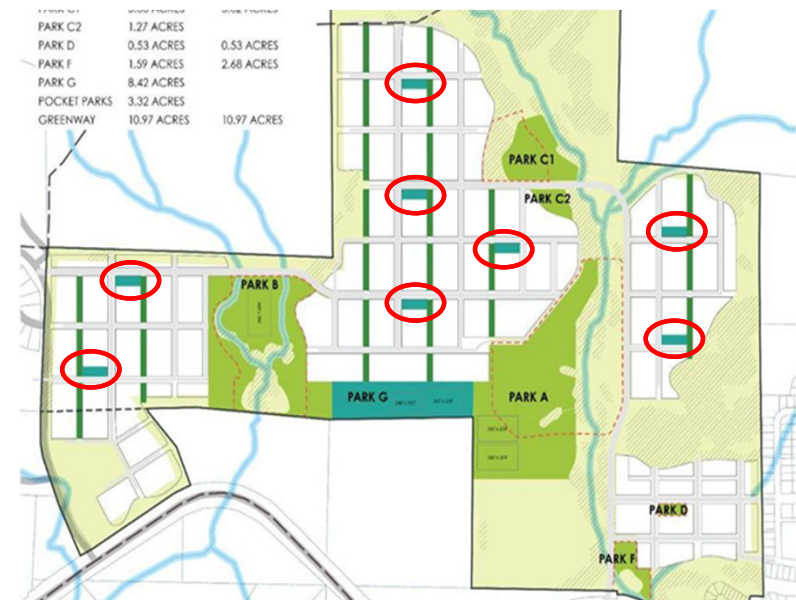
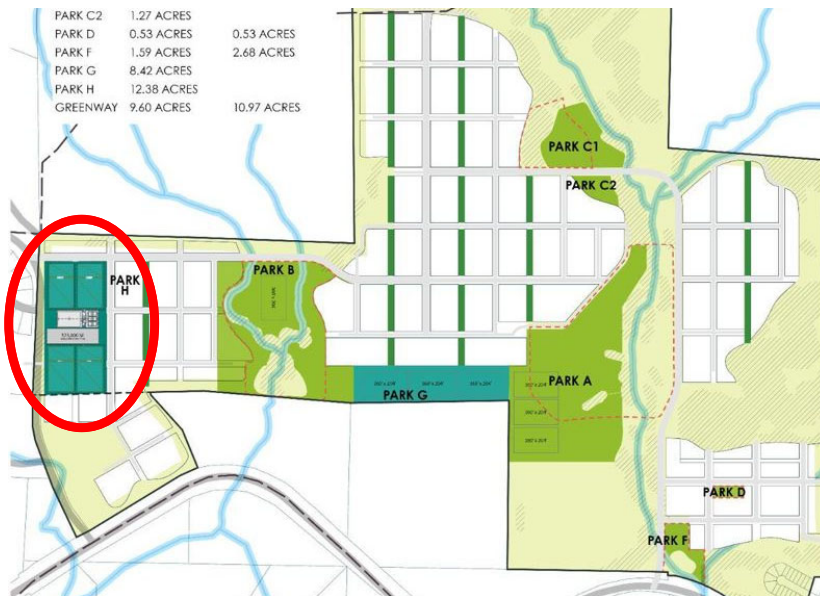
TOTAL TRAIL LENGTH	8.30 MI
MULTIMODAL TRAIL	1.30 MI
SECONDARY TRAIL CONCRETE	4.40 MI
SECONDARY TRAIL SOFT SURFACE	2.60 MI

■ COMMUNITY PARKS



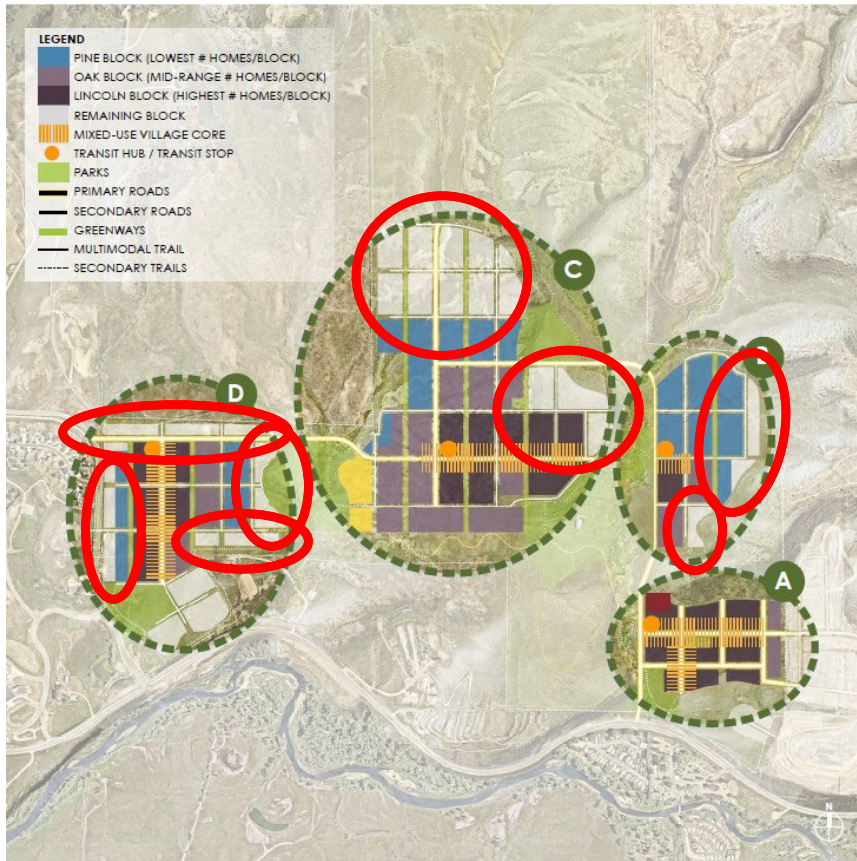
Type	Current Level of Service	PROSTR/2017 Level of Service	Brown Ranch Requirements	Equitable Service	Brown Ranch Proposal	Delta (Requirements - Proposal)
Mini/Neighborhood Parkland	4.8 acres per 1,000 pop.	5.5 acres per 1,000 pop.	33.6 acres	33.9 acres	30.63 acres	- 2.97 acres
Community Parkland	23.4 acres per 1,000 pop.	6 acres per 1,000 pop.	36.7 acres	152.8 acres	39.66 acres	+ 2.96 acres
Regional Parkland	19.2 acres per 1,000 pop.	46+ acres	46+ acres	125.3 acres	0 acres	- 46 acres
Open Space/Natural Areas	179 acres per 1,000 pop.	192 acres per 1,000 pop.	N/A	1,171 acres	125 acres	N/A
Trails	4 miles per 1,000 pop.	3.71 miles per 1,000 pop.	N/A	26.4 miles	8.3 miles	N/A
Special Use Facilities	0.52 facilities per 1,000 pop.	1 facility	1 facility	3.4 facilities	1 facility	0 facilities

Mini/Neighborhood & Community Parkland

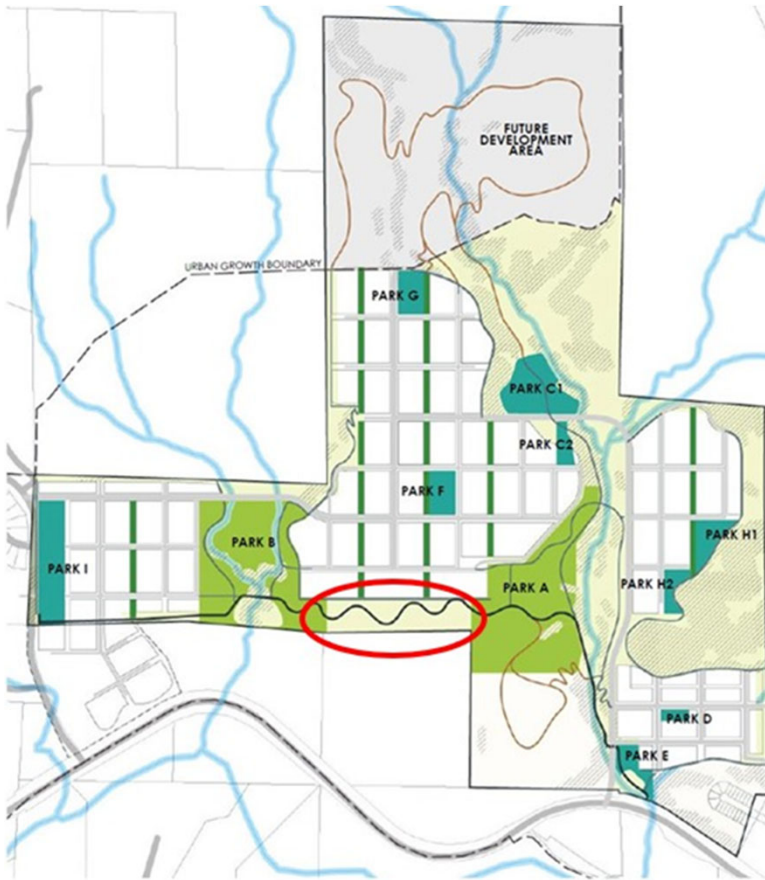


1. Add Park H from Alt #3 to the Regional Parkland Category.

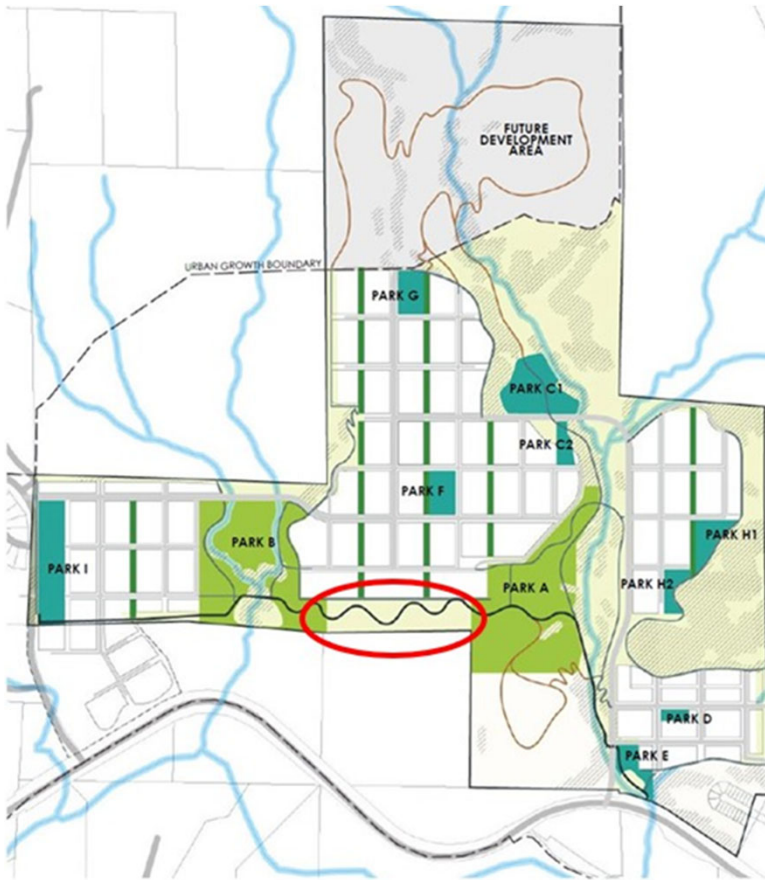
2. Add 8 pocket parks Alt #4
~90'x200'=18,000sf ~ .41 acres.



1. Require Alternative 3, Park H of 12.38 acres to provide services of a regional park and expand Park H's acreage by relocating ghost blocks to expand the park.
2. Require the 46+ acres of regional park land.

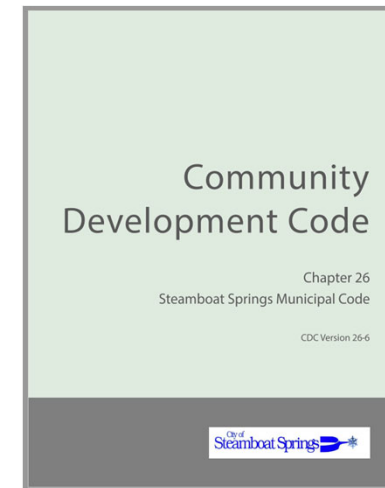


1. Accept YVHA current proposal with exclusion of the 8.42 acres within the Routt County Rifle Club – Shot Fall Zone.

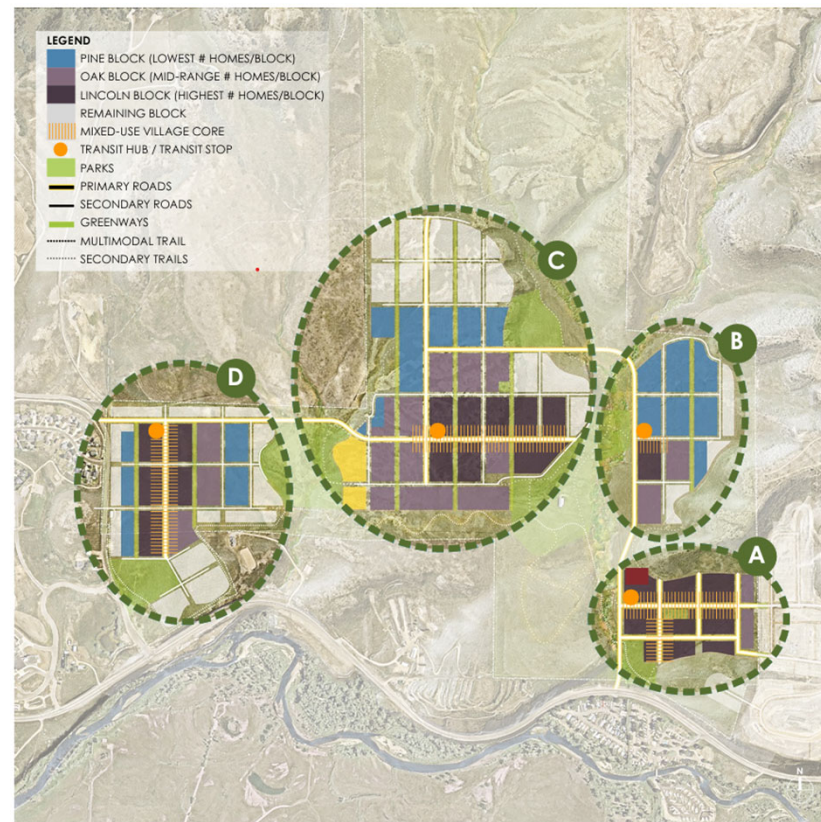


1. Accept YVHA current proposal of 8.3 miles of trails and reroute of the Multi-Modul trail through the Brown Ranch Development that excludes having pedestrians from traveling through Routt County Rifle Club – Shot Fall Zone.

1. YVHA to construct mini parks, neighborhood parks, and greenways. City to construct community parks, regional parks, trails, and open space. YVHA to maintain mini parks, neighborhood parks, and greenways. City to maintain community parks, regional parks, trails, and open space.



1. Mini parks, neighborhood parks, community parks, and greenways to be phased as Brown Ranch development and population progresses. With exception of open space, trails and regional parks, which access to these locations will be included in the first phase of development.



Questions?